



BLACKSTRAP SNOW 20/21 ◀ FACEGEAR, HEADWEAR & ACCESSORIES





**BlackStrap** partners with the industry's top artists to create the highest quality products that feature breathtaking landscapes, fun graphics and truly unique visuals.



Adam



Adam Haynes uses the vivid geography of the Cascade Range and the off-kilter character of its rural inhabitants. Haynes refreshes his creative coffee cup several times a year with solo art shows at galleries up and down the West Coast.

Christina



Christina McKeown is a watercolor and ink artist from Bend, Oregon. "I aspire to create art on my adventures and inspire those around me to preserve and appreciate our world. I love to be outside!"

Erin



Erin Smith is an adamant believer that truth is far stranger than fiction, and has combined her love of words with her love of art in these "tell it how it really is" collages of a slice of life.

Rachel Pohl



Rachel Pohl is an artist, adventurer, humanitarian, and environmentalist. She spends her time with friends and family, in wild places, and in the pursuit of creating artwork that will enhance our lives.

Nicole



Nicole Bishepp started as a freelance designer in the action sports world. She launched her product line in 2016 that features her artwork on various items like apparel, pens/diaries and Zip Ties.

Scott



Scott McCurdy's work is a way to develop as an artist and apply experience to something that he can share with others. He enjoys the ability to communicate with the viewer through powerful color, narrative, and strong imagery.

Zach



Zach Clanton specializes in Alaskan backcountry and aerial photography. His inspiration is driven by his passion for nature, adventure and the thrill of the shot.

Megan Marie Myers



Megan Marie Myers designs invite the community to follow four children on their extraordinary journey through a world with families at the center of each universe they encounter.

Anthony



Anthony Acinelli is an avid skier, cycling enthusiast and illustrator of happy things. He hopes his illustrations make people smile and learn to take life a little less serious.

Glenna Andrews



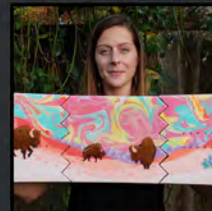
Glenna Andrews is a PNW native who is influenced strongly by her love for the outdoors in addition to the simplicity and peace that she experiences in nature.

JOSH RAMP



Josh Ramp is an illustrator and designer enthralled with shapes, symbols, marks, icons, letters and images. Josh draws inspiration from a lifetime of living in the Pacific Northwest.

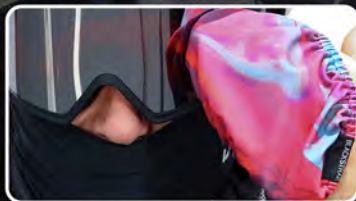
JANESSA BORK



Janessa Bork is a freelance illustrator based in BEND. Her work is inspired by the beauty of nature and her passion for the outdoors. Within her work you will find majestic nostalgia, vibrant colors, and a combination of wild and organic forms.

# GOGGLE COVER


PROTECTING THE ENVIRONMENT & YOUR GOGGLES

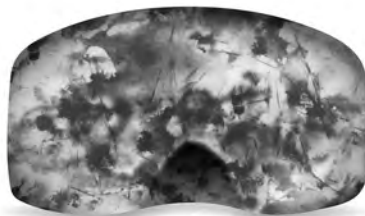


The **BlackStrap** Goggle Cover is proudly made from 100% repurposed fabric. Regardless if you are storing your goggles between days on hill, eating lunch or need to clean your goggles on the lift, the amount of versatility this small accessory packs will impress!





BLACKSTRAP SNOW 20/21 



RE-PURPOSED



EASY ON/OFF



LENS SAFE



4-WAY STRETCH



WASHER-DRYER



CUSTOM PRODUCT

PRODUCT INFORMATION

SUGGESTED USES



IN THE BAG



ON THE LIFT



SNACK TIME



SNOW SPORTS



MOTOR SPORTS



OPTION 1



POP DISPLAY BOX OF 48 COVERS

- (1) Assorted SKU (Inline or Custom)
- Ships as single module display
- Small footprint
- Reorders in Quantities of 24 MOQ
- UPC on box & each cover



OPTION 2



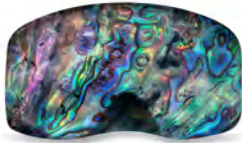
48 COVERS ON HEADER CARDS

- (1) Assorted SKU (Available in Custom)
- J-Hook (\$.25 per hook)
- Reorders in Quantities of 24 MOQ

# E-COMM SKU'S

ASSIGNED UPC'S FOR ONLINE SALES

48 unit MOQ // Reorder 24 unit MOQ



ABALONE



BANANA LEAVES



BUBBLE BLUR



DARK MATTER



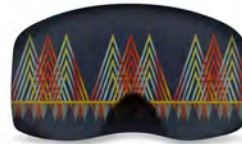
FALL SALMON



FUSION



GOAT BANANAS



GRADIENT PEAKS



JURASSIC



KIWI KIWIS



MIDNIGHT



MULTI CAMO GREEN



POKER



SLASHER



TREE LINE



ZIG ZAG

# THE HOOD

EXO-HINGED BALACLAVA



**The Hood Balaclava** sets the industry standard for performance, quality and comfort for snowsports enthusiasts from the chairlifts to the backcountry. Critical construction and insulation maximizes helmet compatibility and freedom from restriction with our patented Exo-Hinge, which can be worn up or down.





SOLID TONES



BLACK  
TOP SELLER



BRIGHT BLUE



BRIGHT CORAL  
NEW



BRIGHT GREEN



BRIGHT ORANGE



CAPPUCCINO  
NEW



COPPER



CORAL  
TOP SELLER



CORONA



CRIMSON



DEEPPURPLE



DRAB  
NEW



FOREST GREEN



GRANITE  
TOP SELLER



HIBISCUS

4,500 Yen

SOLID TONES



JADE



MALLARD



MERLOT

NEW



MINT



MUSTARD



NAVY



OLIVE

TOP SELLER



ORCHID

NEW



PASTEL BLUE



ROSE



ROYAL BLUE



STEEL

TOP SELLER



WHITE



WINE

TOP SELLER

4,500 yen



ARMY OLIVE  
TOP SELLER



BIRDS PARADISE  
NEW



BLEACHED



BRUSHED BLACK  
NEW



DIGITAL MAROON  
NEW



FATIGUE



FEATHERS RAINBOW



FERNS NAVY  
NEW



FLORAL FROSTY



FLORAL PALMS



FLORAL RETRO  
TOP SELLER



GEODE TEAL  
NEW



HYDRO



MIDNIGHT  
NEW



NEW AGE PINK  
NEW



OLD GLORY



SMOKE



SNOW ISSUE



SPACE GALACTIC

TOP SELLER



SPACE GRAY



SPACE GREEN



SPACE NEBULA



STATIC



TIE DYE BLACK



TIE DYE GREEN



TIE DYE ORCHID



TIE DYE TEAL



TIMBER SNOW

TOP SELLER



TREADED

NEW



TWEED BLACK

TOP SELLER

# EXPEDITION HOOD

DUAL LAYER EXO-HINGED BALACLAVA



The **BlackStrap** Expedition Hood Balaclava sets the industry standard for performance, quality and comfort for snowsports enthusiasts when the weather is at its worst. The 360° Dual Layer construction maximizes thermal warmth while the contoured design maximizes helmet compatibility without restriction.



SOLID TONES



BLACK  
TOP SELLER



BRIGHT BLUE



BRIGHT ORANGE



CRIMSON



DEEP PURPLE



FOREST GREEN



GRANITE  
NEW



MALLARD



MERLOT



MINT



NAVY



OLIVE  
TOP SELLER



ORCHID



STEEL  
TOP SELLER



WINE  
TOP SELLER

5,000 Yen

## TEAM HOOD

ADJUSTABLE DUAL LAYER BALACLAVA



The **BlackStrap** Team Hood Balaclava Facemask is a classic design with added innovation driven by our factory athletes & park crews worldwide. The Team Hood has adjustable pull tabs allowing it to be worn over or under a helmet. The dual layer construction provides maximum protection while the inner hinge construction articulates and is breathable.



SOLID TONES



BLACK  
TOP SELLER



BRIGHT ORANGE



CORAL  
NEW



DRAB  
NEW



GRANITE  
NEW



MALLARD



MERLOT



MINT



NAVY  
TOP SELLER



OLIVE



ORCHID



SEAFOAM



STEEL  
TOP SELLER



WHITE



WINE  
TOP SELLER





BIRDS PARADISE  
NEW



BLEACHED  
TOP SELLER



BRUSHED BLACK  
NEW



CAMO CANVAS  
NEW



FATIGUE



FLORAL RETRO  
TOP SELLER



GEODE TEAL  
NEW



MARSH GRASS  
NEW



MIDNIGHT  
NEW



SPACE GALACTIC



SPACE GREEN



STATIC



TIE DYE BLACK  
NEW



TIMBER SNOW



TREADED  
NEW

## SOCK HOOD

DUAL LAYER ARTICULATED BALACLAVA



The **Sock Hood Balaclava** is a classic design that provides maximum protection from the elements with dual layer construction. The Sock Hood has a custom 3-panel contoured design to maximize helmet compatibility and soft touch piping around the articulated face hole so that can be worn over your nose or under your chin without restriction.





**SMARTERTRAVEL**

"Antarctica gear that will keep you warm anywhere"

3 PANEL DESIGN

SOFT TOUCH PIPING

ARTICULATING FACE HOLE

DUAL LAYER ALLOVER

CONTOURED NECK

HELMET FRIENDLY

4-WAY STRETCH

LENS SAFE

BREATHABLE

ANTIMICROBIAL

UPF 50+ RATED

CUSTOM PRODUCT

WASHER/DRYER

PRODUCT SPECS

# SOCK HOOD



**SKY**  
ADAM HAYNES



**PARTY**  
ANTHONY ACCINELLI



**PALMS MAROON**  
SCOTT MCCURDY



**SPINES**  
ZACH CLANTON



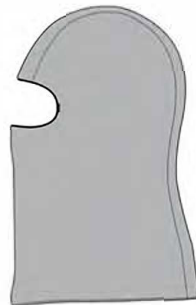
**BLACK**



**GRANITE**



**OLIVE**



**STEEL**



**BLEACHED GRAY**



**DIGITAL MAROON**



**SNOWSCAPE**



**TIE DYE TONES**

## THE TUBE

DUAL LAYER FACEMASK



The **Dual Layer Tube** sets the industry standard in performance, comfort and protection from the elements. Skiers, snowboarders, and snowmobile riders have made the Dual Layer Tube their go to facemask for snowsports as it is soft, warm and functional. Featuring 360° dual layer protection and a highly breathable perforated liner.



SOLID TONES



BLACK  
TOP SELLER



BRIGHT GREEN



BRIGHT ORANGE



COPPER



CORAL



CORONA



CRIMSON



DEEP PURPLE



FOREST GREEN



GRANITE  
NEW



HIBISCUS  
TOP SELLER



JADE

3,800 Yen

SOLID TONES



MALLARD



MERLOT  
TOP SELLER



MINT



NAVY  
TOP SELLER



OLIVE



ORCHID



PASTEL BLUE



PASTEL PURPLE



ROSE



STEEL  
TOP SELLER



TEAL



WHITE

3,800 yen



ABSTRACT



ABSTRACT STREAKS  
NEW



ACID WASH GREEN  
NEW



ALOHA



ARMY OLIVE



BIRDS PARADISE  
NEW



BLEACHED WHITE



BRUSHED BLACK  
NEW



DAINTY FLOWERS



DIAMOND SLATE  
NEW



DIGITAL SNOW



FLORAL GALAXY



FLORAL RETRO



KALEIDOSCOPE



MIDNIGHT  
NEW





NEW AGE PINK  
NEW



REEF  
NEW



ROULETTE  
NEW



RUBBLE  
NEW



SPACE GRAY



SPACE NEBULA



STATIC



TIE DYE BLACK



TIE DYE ORCHID



TIE DYE TEAL



TRIBE BLACK & WHITE



TRIBE DECO



TWEED BLACK  
TOP SELLER



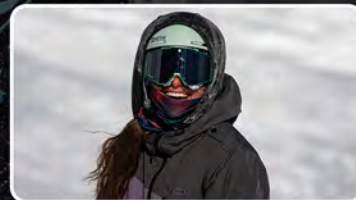
VELVET LACE  
NEW



WOODSTOCK  
NEW

# THERMA TUBE

MIDWEIGHT FACEMASK



The **Midweight Therma Tube** Neck Gaiter sets the industry standard for comfort and blurs the line between fashion and performance on the slopes. Skiers, snowboarders, and backcountry enthusiasts have made the Therma Tube their go-to facemask. The fabric has a brushed inner finish that is extremely soft, lightweight and breathable. The 4-way stretch maximizes helmet compatibility and offers multiple wearing applications.





**GEARJUNKIE**

"We've tested BlackStrap and love the warmth and snug feeling."



HELMET FRIENDLY



4-WAY STRETCH



LENS SAFE



BREATHABLE



ANTIMICROBIAL



UPF 50+ RATED



CUSTOM PRODUCT



WASHER/DRYER

PRODUCT SPECS

**THERMA TUBE**



**BLACK**



**CORAL**



**GRANITE**



**MARBLED BLUE**



**MAROON**



**MINT**



**ORCHID**



**STEEL**



**ALPENGLow**

CHRISTINA McKEOWN



**GORGE**

CHRISTINA McKEOWN



**BALDFACE**

ERIN SMITH



**7th HEAVEN**

GIANNA ANDREWS

3,600 Yen



**FIRE & ICE**  
JANESSA BORK



**MIDNIGHT MOON**  
JANESSA BORK



**SHRED TOWN GRAY**  
JOSH RAMP



**A-FRAME**  
RACHEL POHL



**BANANA LEAVES**



**DARK MATTER**



**FRESHIES PASTEL**



**GRADIENT PEAKS**



**GRUNGE GRAY**



**NAVY CAMO**



**SLASHER**



**SPACE GALAXY**

# APEX TUBE

DUAL LAYER THERMAL FACEMASK



The **Apex Tube** facemask offers the highest standard of performance & thermal warmth. New for winter 20/21 BlackStrap's **APEX** dual layer construction features a soft touch liner made from our Therma Midweight Fabric and our patented outer shell fabric making this facemask the warmest we have ever made!





**BEST**

"This goggles makes a huge difference with your comfort level."



DUAL LAYER TI 829 FIBER  
OUR FAVORITE CHECK TUBE



BORTOUGLED NECK  
SEALING AIR FLOW



NOSE & CHEEK SOFT TOUCH BAND  
SEAMLESS GOOGLE INTERFACE



HELMET FRIENDLY



4-WAY STRETCH



LENS SAFE



OUTSIDE DRY WICKING



BREAKABLE



ANTI-FOG



UVF 60+ RATED



WASHABLE

PRODUCT SPECS



BLACK



CORONA



GRANITE



MERLOT



SKY

ADAM HAYNES



LOST LAKE

CHRISTINA MCKEOWN



UPSTREAM DOOM

GIANNA ANDREWS



TORRES

RACHEL POHL



BACKWOODS



FATIGUE BLACK



FLORAL ZEN



HENNA



# SINGLE LAYER TUBE

LIGHTWEIGHT ALL SEASON FACEMASK



The **Single Layer Tube** sets the industry standard for lightweight, comfort and protection from the elements. Skiers, snowboarders, and backcountry enthusiasts have made the Single Layer Tube their go to facemask for mild temperature and high activity because it is soft, packable and extremely breathable. The 4-way stretch fabric is UPF 50+ (UV) rated for sun protection.





"Black Strap covers my face from the winter elements on stormy days and on blue sky days."

**SKI**

"Feels great on skin and fits under a helmet perfectly"



HELMET FRIENDLY



4-WAY STRETCH



LENS SAFE



BREATHABLE



ANTIMICROBIAL



UFF 50+ RATED



CUSTOM PRODUCT



WASHER-DRYER

PRODUCT SPECS



**DAWN PATROL**  
ADAM HAYNES



**WAITING FOR YOU**  
ADAM HAYNES



**STARRY NIGHT**  
AMBER TURK



**WAVE MTN MOON**  
JANESSA BORK



**FAIRY MEADOWS**  
RACHEL POHL



**CONSPIRACY**



**DIGITAL MAROON**



**FERNS NAVY**



**FUSION**



**ICE WALL**



**MOUNTAIN CAMO**



**STRANGER THING**



**TREE LINE**



**TROPICS**



**WICKER GRAY**

# KIDS HOOD

EXO-HINGED BALACLAVA



The **KIDS Hood Balaclava** bolsters the same technology as the adult Hood Balaclava. Young skiers & snowboarders have made this piece their go to balaclava thanks to its patented Exo-Hinge construction, seamless helmet compatibility and 100's of colorway options.





BLACK  
TOP SELLER



BRIGHT BLUE



BRIGHT GREEN



BRIGHT ORANGE



CORAL  
TOP SELLER



CRIMSON



DEEP PURPLE



FOREST GREEN



PASTEL BLUE



PASTEL PURPLE



ROSE



ROYAL BLUE  
TOP SELLER



STEEL



TURQUOISE



WINE



ABSTRACT



BRAIN FREEZE



CAMOTONAL  
NEW



ELECTRIC  
NEW



FATIGUE BLUE



FINGER PAINT



FLORAL



FRENCHIE



GOOD BURGER  
TOP SELLER



HEX FOREST  
NEW



KAAAPOW



LIGHTNING BOLTS



POLKA DOTS



SNOW ISSUE



SPACE GALACTIC  
TOP SELLER



SWEET TOOTH



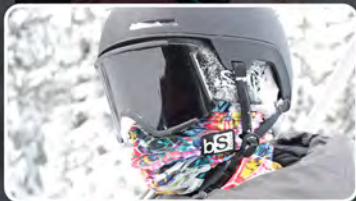
THUNDER EGG  
NEW



TIE DYE LOUD  
NEW

## KIDS EXPEDITION HOOD

DUAL LAYER EXO-HINGE BALACLAVA



The **KIDS Expedition Hood** Balaclava has the same technical construction and quality as the Adult EXP Hood. Young Skiers and Snowboarders have made the EXP their go to balaclava for the harshest weather due to the 360° dual layer construction which maximizes thermal warmth. The contoured design maximizes helmet compatibility without restriction.





BLACK



BRIGHT BLUE



BRIGHT GREEN



BRIGHT ORANGE



CORAL



CRIMSON



DEEP PURPLE



FOREST GREEN



HIBISCUS



JADE



ROSE  
NEW



ROYAL BLUE



STEEL



TURQUOISE  
NEW

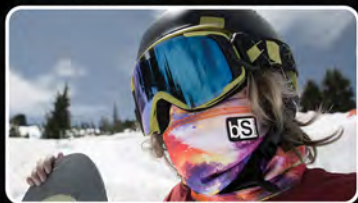


WINE  
NEW



## KIDS TUBE

DUAL LAYER FACEMASK



The **KIDS Dual Layer Tube** has the same construction and quality as the adult Dual Layer Tube. Parents have made this product their go-to purchase for their kids. Keeping them warm and comfy throughout the day. Featuring 360° degrees of dual layer protection with a seamless inner lining that is highly breathable for all season use.





BLACK  
TOP SELLER



BRIGHT BLUE



BRIGHT GREEN



BRIGHT ORANGE



CORAL



CRIMSON



DEEP PURPLE



FOREST



ORCHID



ROSE  
TOP SELLER



ROYAL BLUE



TURQUOISE  
TOP SELLER



ABSTRACT  
TOP SELLER



BLEACHED WHITE  
NEW



BRAIN FREEZE



FESTIVE  
NEW



FLORAL ISLAND  
NEW



FRENCHIE



LIGHTNING BOLTS  
TOP SELLER



NEONS  
NEW



PUZZLED  
NEW



SNOW ISSUE  
TOP SELLER



SPACE GREEN  
TOP SELLER



TIE DYE ORCHID



TIE DYE TEAL



TRIBE DISCO  
NEW



WATERFALL  
NEW

# KIDS THERMA TUBE

MIDWEIGHT FACEMASK



The **KIDS Midweight Therma Tube** has the same technology and quality as the adult version. Young skiers & snowboarders love the brushed inner fabric. This piece is soft, lightweight and breathable. The 4-way stretch maximizes helmet compatibility and offers multiple wearing applications.





**GEARJUNKIE**

"We've tested BlackStrap and love the warmth and snug feeling."

FINISHED SEAMS

BRUSHED SOFT TOUCH FABRIC

CONTOURED FIT NECK

MIDWEIGHT

HELMET FRIENDLY	4-WAY STRETCH	LENS SAFE	QUICK DRY WICKING	BREATHABLE	ANTIMICROBIAL	CUSTOM PRODUCT	WASHER/DRYER

PRODUCT SPECS



**BIGFOOT SKI**  
ANTHONY ACCINELLI



**HAND PLANT**  
JOSH RAMP



**LIL SHREDDER**  
JOSH RAMP



**CAMP FIRE**  
MEGAN MYERS



**TIN PAN ALLEY**  
MEGAN MYERS



**BANANA LEAVES**



**INVADERS**



**JURASSIC**



**JET BLUE**



**KIWI KIWIS**



**MOUNTAIN CAMO**



**PIZZA CAMO**



**RUBIX**



**SOLDIERS**



**SPACE GALACTIC**